

# Microwave antenna

## AL1-10/ME

# ALCOMA

### Microwave antenna description

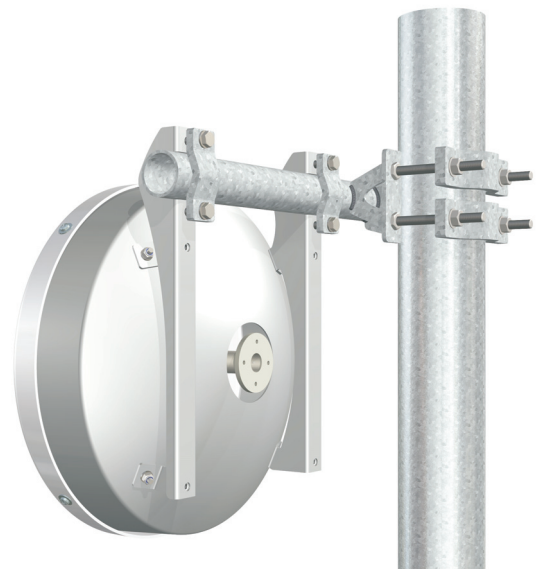
High Performance 0.35 m antenna for point to point links.

### General parameters

Diameter	0.35 m (1 ft.)
Feeder	single polarized
Input flange standard	circular, hole diameter 19.05 mm
- optional	IEC UBR 100
Polarization	horizontal / vertical
Environmental temperature	-45 °C ÷ +55 °C
Color	gray
Radom material	plastic
Radom color	white

### Electrical parameters

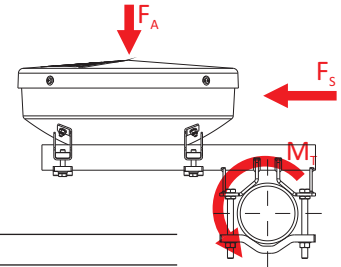
Frequency band	10.300 - 10.700 GHz
Gain mid band	28.0 dBi
3dB - BW	3.2° (H/ V)
Return loss	> 1.20 (20 dB)
F/B ratio	48 dB
XPD	30 dB
Class	2 or 3 (ETSI EN 302 217)



## Microwave antenna AL1-10/ME

### Mechanical parameters

Performance stability	up to 30 m/s (110 km/h)
Survival	up to 55 m/s (200 km/h)
Net weight	5.6 kg
Pipe diameter	38 - 115 mm
Adjust Azimuth	$\pm 180^\circ$
Adjust Elevation	$\pm 25^\circ$



### Forces and twisting moment due wind and ice

Wind velocity	30 m/s (110 km/h)	55 m/s (200 km/h)
$F_a$ - axial force	90 N	270 N
$F_s$ - side force	30 N	85 N
$M_t$ - twisting moment	25 Nm	65 Nm
Vertical load due to radial ice 25 mm (ice density 7kN/m <sup>3</sup> )		70 N

### Outlines

